

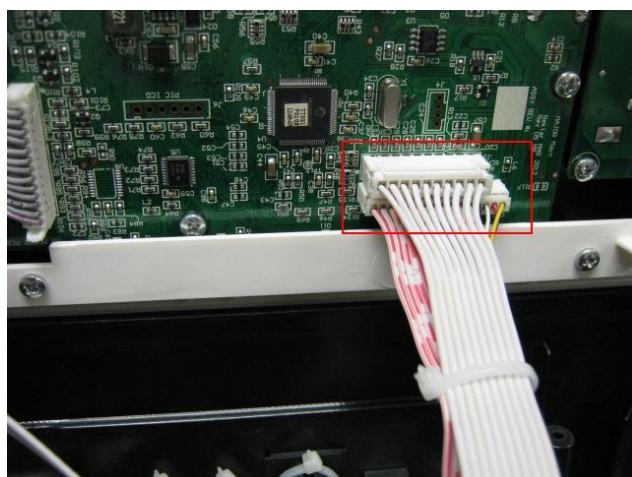
## Keybed Replacement Instructions

### Disassembling the top/bottom panel

There are 28 screws you need to remove from the bottom of the P4 (33 on the P6) to separate the top panel from the bottom. 4 small screws on each side and 20 recessed screws (25 on the P6) on the bottom. These screws are labeled with green circles in the images below. There are 10 larger screws on the P4 (12 on the P6) marked with red 'x's below. These hold the keybed to the base, leave them in place for now. Make sure to keep the screws from each section of your Panorama separate (I recommend using small cups or baggies).



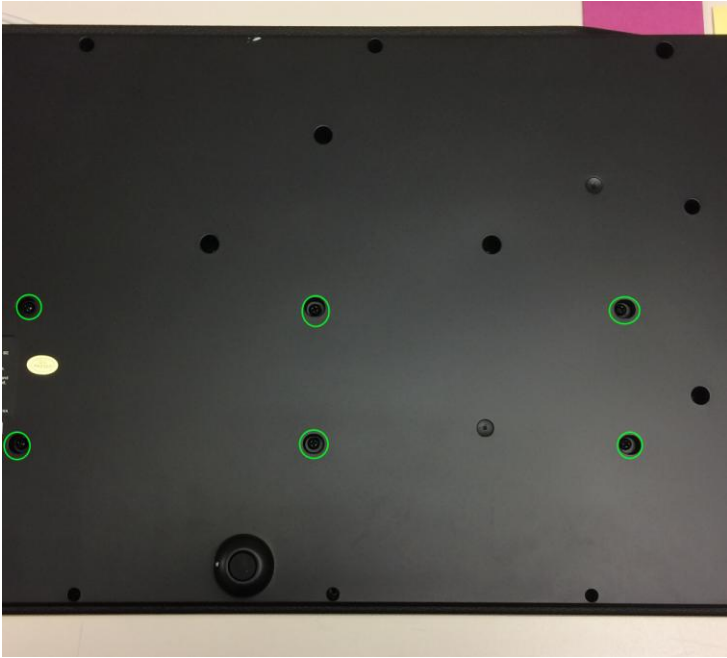
Disconnect three ribbon cables that connect the top and bottom panels. You may need to cut the zip tie, which couples the rear PCB's ribbon cable with the keyboard's ribbon cable.



If you have a P6, you will also need to remove the screw which secures the ribbon cable for the keyboard.



Set the top panel aside and turn the base upside-down again.



Remove the larger screws, which hold the keyboard to the base (10 on P4, 12 on P6). Now when you lift the bottom panel, the keyboard will still be lying on the table.



Set the old keybed aside and put the new keybed on a flat surface, with the keys facing down. Set the base on top of the keybed, doing your best to line up the screw hole on the base with the stand-off posts on the keybed. If you find that difficult, you can also try aligning the posts with the screw holes, with the bottom panel oriented top-side up. Then let one end of the base hang off the side of a table, so you can put the screws in from the bottom. In either case, put all the screws in loosely, then tighten them once you have made sure the keybed is aligned properly.

Now, just follow the instructions in reverse to reassemble the unit. If you have a P6, remember to replace the screw that secures the keybed's ribbon cable, or the ferrite ring will knock around when you move it.

If you are unsure about one of the steps described above or if something looks different from what is shown in the images, don't hesitate to ask. It's always easier to answer a question before there is a problem, than to fix something once it has broken.